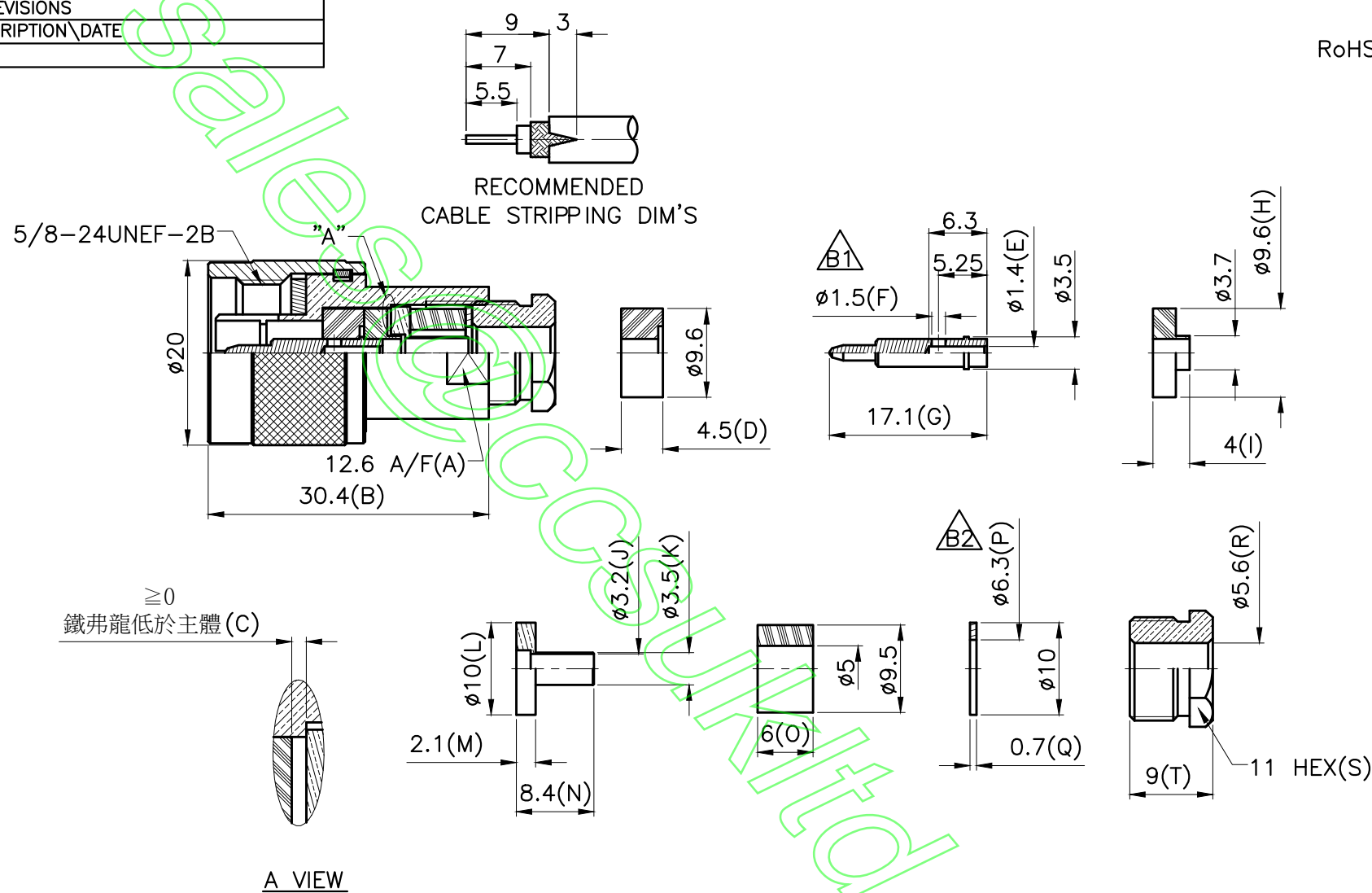


ISS	REVISIONS
	DESCRIPTION \ DATE

RoHS COMPLIANT



TITLE: N MALE CLAMP  
(FOR RG58, RG223, RG400, RG142)

PART NO: NPSC5801      030

DR. NO:

APRD:  
CHKD:  
DR:

UNLESS OTHERWISE SPECIFIED TOLERANCES  
0.5-6 = ±0.2  
>6-30 = ±0.4  
>30-120 = ±0.6  
>120-315 = ±1  
>315-1000 = ±1.6  
ANGLES = ±5°

DATE: 04/02/12"

SHEET: .

UNIT: mm

SCALE: 1.5/1

	NUT	BRASS	NICKEL
	WASHER	BRASS	NICKEL
	GASKET	SILICONE	WHITE
	TOP HAT	BRASS	NICKEL
	INSULATOR	TEFLON	WHITE
	CONTACT PIN	BRASS	GOLD
	INSULATOR	TEFLON	WHITE
	BODY	BRASS	NICKEL
	RING	BRASS	NONE
	GASKET	SILICONE	WHITE
	SHELL	BRASS	NICKEL
NO.	DESCRIPTION	MATERIAL	FINISH